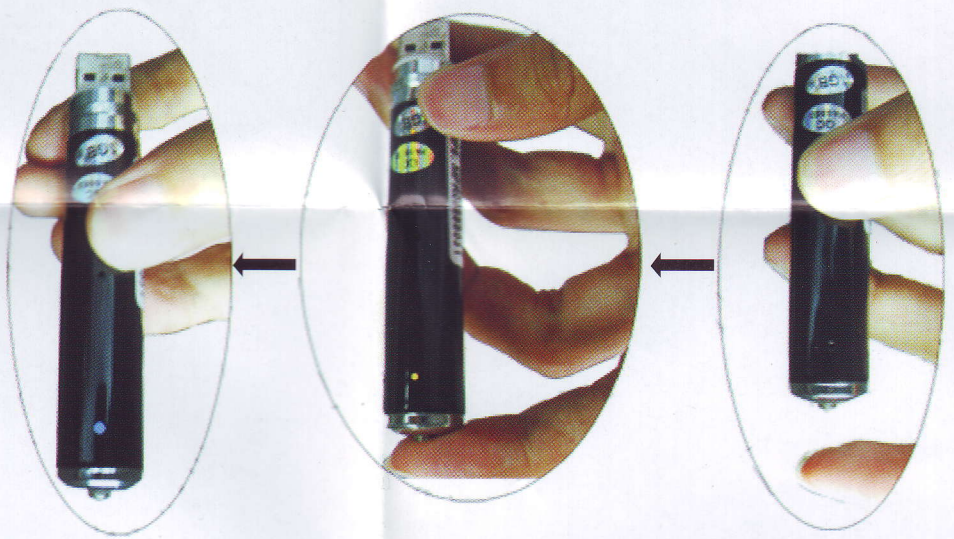


- A: Pinhole camera Lens
- B: Microphone
- C: USB 2.0
- D: Record&Power ON/OFF
- E: Record and power light
- F: Reset

Yellow Light: Waiting
Blue Light: Recording



Press switch 1 second, the light will be showed yellow
The yellow light will turn to blue after 8-10 seconds it begins to record

Press switch 1 second again to save the data and the light will turn off (after 3-5 seconds)

