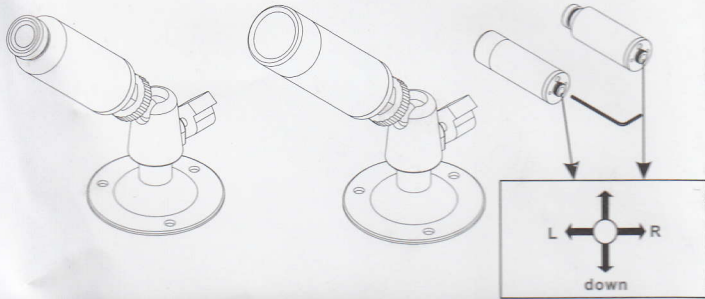


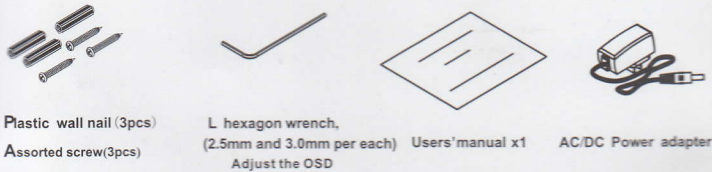
# USER MANUAL



## Size



## Parts list



Plastic wall nail (3pcs)  
Assorted screw(3pcs)

L hexagon wrench,  
(2.5mm and 3.0mm per each)  
Adjust the OSD

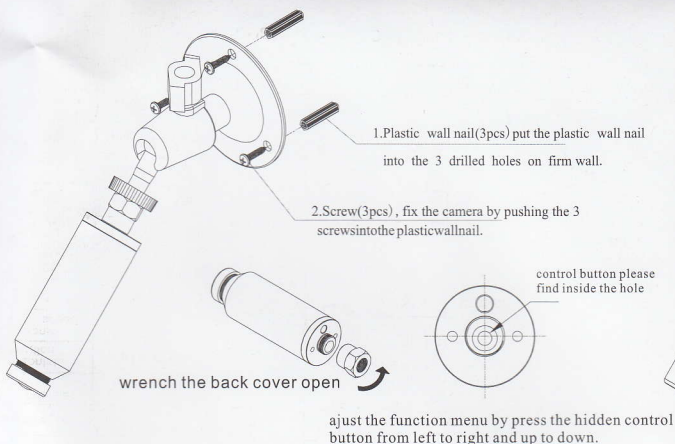
Users'manual x1

AC/DC Power adapter

## Technology data

Signal System	NTSC/PAL	Image sensor	CCD
Effective pixels	768 (H) × 494 (V) NTSC 752 (H) × 582 (V) PAL	video output	1.0 P-P NTSC/PAL composite,
Synchronization system	Sync System	SNR	more than 52dB (automatic gain OFF)
Horizontal resolution	color 600tv Line	Minimum illumination	0.15LUX (AGC ON, F1.2)
Electronic shutter speed	Auto [ (NTSC: 1/60-1/120, 000) (PAL: 1/50-1/120, 000) ]	White balance	ATW1/ATW2/AWC-MANUAL outdoor(1,800°K - 10,500°K)indoor (4 - 500°K-8 - 500°K)
Frame cumulative function	on/off (optional limit X2-X256)	Digital Noise Reduction	ON (0-32 adjustable)
Backlight compensation	OFF/backlight compensation/ wide dynamic (level adjustable)	Gain function	ON/OFF (level adjustable)
Day and night mode	auto/black and white/ color/ external control	Privacy shield	on/off (8 programmable zone)
Image flip	H-RE / -RE ) on/off	digital zoom	on ( - 56) /off
Motion detection	on (16x 12 grid)/ off	Saturation	on/off (level adjustable)
Sharpness	on/off (level adjustable)	Blemish compensation	128 point
Lens	2. 6/3.5mm auto iris lens		
working temperature	-10~50℃	working power	DC12/110mA (IR on, Maximum current is 1000mA)

Design and parameter changes without prior notice, Interpretation-based company



## Guarantee

- We provide a period of one year quality assurance services from the date of products purchased. We will provide repair and replacement services for quality problem.
- Products for Repair and replacement must be within the warranty period. Cost of transporting for product maintenance should be paid by customer
- Quality assurance applies only to the initial purchase customers.
- In condition of Maintenance and modification without authorization, accident, misuse and deliberate damage, This quality assurance is no valid.
- In terms of quality assurance, Company has the responsibility to limit maintenance and replacement of finished products.
- If you need warranty service, be sure to send the product to our customer service center or dealer.

warranty period		one year
Purchase date	date	month year
warranty period		
customer address:	customer name	
	tel:	
contact person:	Name	
	Agents	
	Tel:	

Before consultation with service products, please read the instructions carefully.  
Please describe the practical problems of product accurately .

## USER MANUAL

If you need to use the OSD menu, press the SET button, the main menu is displayed on the screen  
Menu Settings

## Features

- Available power can be connected to DC12 power supply
- DNR (digital noise reduction) chipset
- It has a DSP chip adjuvant, can eliminate the image noise effectively, and more clear in low light
- Cleanly display images
- Turn demon-type day and night
- In normal or high brightness, the camera can protect color mode, instead, it can be turned into BAA/LOW brightness mode
- Manual/DC lens
- ou can choose the manually by switcher or DC lens

Exposure	Automatic iris control/ Fixed lens model/ESC
BR. LEVEL	0~100
AGC LIMIT	0~56
BACKLIGHT	BLC/WDR 1/ WDR 2
HLM	ON/OFF
MIRROR	ON/OFF
LANGUAGE	ENG
EXIT	

