

2. 4G Wireless Video Door Phone

Manual Instruction



Design change may be taken without prior notice.

I. Introduction

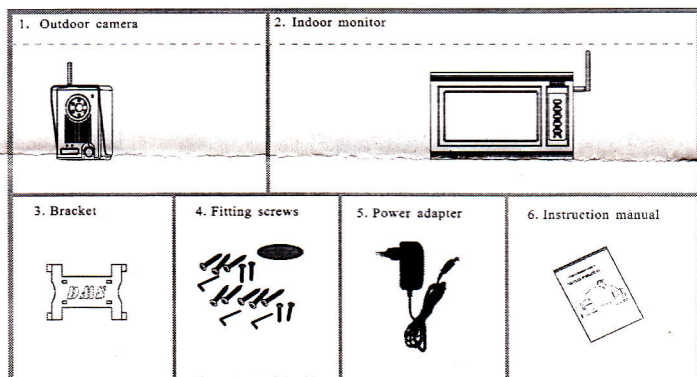
This product adopts the theory of 2.4G digital audio frequency and video wireless transmission, outdoor surveillance and indoor display, bilateral intercom. The indoor monitor has the remote unlock function and can monitor outdoor circumstances at any time, the advanced infrared assisting lumination, which make sure visitor(s) can be viewed at night. With fashionable and fresh appearance, clear viewing, simple installation way, adding one more scientific protection for your family, this is absolutely an ideal security product for modern families. For better taking advantage of the prior functions, please carefully read our instruction for correct installation and operation.

【Remark】: This manual is suit for the kit with one camera matching one monitor instead of multiple matching style.

II. Parts

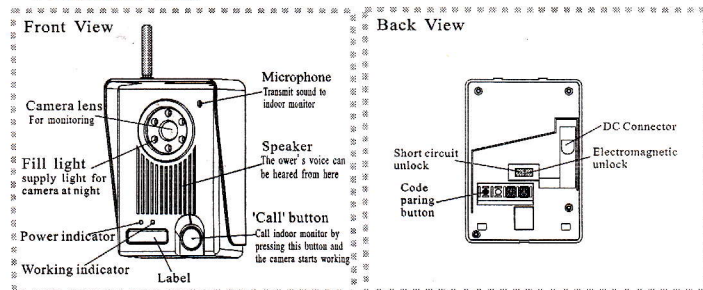
One complete package includes:

<input type="checkbox"/> Indoor monitor	1PCS	<input type="checkbox"/> Outdoor camera	1PCS
<input type="checkbox"/> 12V Power adapter	1PCS	<input type="checkbox"/> Bracket	1PCS
<input type="checkbox"/> Fitting Screw	1BAG	<input type="checkbox"/> Sample wire for E-lock	1PCS

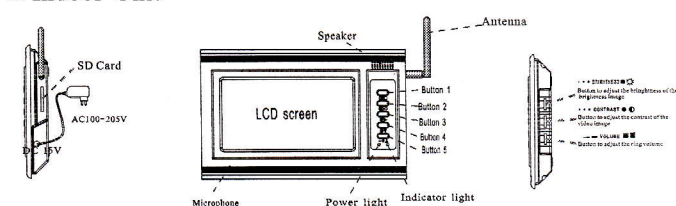


III. Functions

1. Outdoor Unit



3. Indoor Unit



Button 1: Menu, Confirm, Picture recording (optional)
Press this button to enter into menu operation interface and adjust door phone system; picture recording function is optional for the system.

Button 2: Video recording (optional), Exit
Video recording function is optional for door phone system; press this button to exit menu operation.

Button 3: Monitor, Right

Press this button to monitor outdoor circumstance or display its image; turn right function in menu operation.

Button 4: Intercom, Up

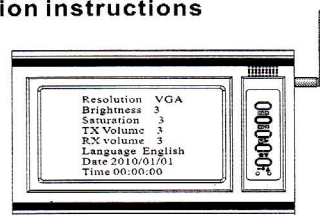
Activate conversation between indoor and outdoor units; turn up function in menu operation.

Button 5: Unlock, Down

press this button to release the lock connected with door phone; turn down function in menu operation.

IV. Operating Instruction

Menu operation instructions



1. How to enter into Menu operation interface.
When power is on, and LCD is closed, press button to enter into Menu operation interface.

Note: Press to exit.

2. How to adjust resolution.

After entering into menu, press button to option list, press button or button to choose the right item.

(VGA: video graphics array, high resolution; QVGA: quarter video graphics array, low resolution)

3. How to adjust brightness.

Press button to "Brightness", press button to option list, press button or button to choose the right item.

4. How to adjust Saturation.

Same as above procedures.

5. How to adjust TX volume (transmitter volume)

Press button to "TX volume", press button to option list, press button or button to choose the right item.

6. How to adjust RX volume (receiver volume)

Same as above procedures.

7. How to adjust language.

Press button to "Language", press button to option list, press button or button to choose the right item.

8. How to adjust date.

Press button to "Date", press button to the item needed to be adjusted, press button or button to adjust.

9. How to adjust time.

Same as above procedures.

The following additional functions will only be activated if add SD card.

- a. Video playback
- b. Storage capacity
- c. Delete capacity
- d. Restore defaults

How to access additional functions interface.

Press to enter into operation interface, then press .

① How to record videos.

Press when it is in standby state, press to record a 10S video. Another press will record a new 10S video, no operation within 45S or pressing monitor button will make it turn to standby state.

② How to record pictures.

Press when it is in standby state, press to take a picture. Another press will record a new picture, no operation within 45S or pressing monitor button will make it turn to standby state.

③ How to check recording videos.

Press to enter into operation interface, press , press , press again, then press or to choose, press to check recording videos, press to exit.

④ How to check recording pictures.

Press to enter into operation interface, press , press , press again, then press or to choose, press to check recording pictures, press to exit.

⑤ How to delete recording videos.

Make a long press (more than 3S) in process of browsing of videos, it will appears "Yes" or "No", press to choose "Yes", press to delete.

⑥ How to delete recording pictures.

Make a long press (more than 3S) in process of browsing of pictures, it will appears "Yes" or "No", press to choose "Yes", press to delete.

⑦ How to check storage capacity.

Press to enter into operation interface, press , press , then vser can check storage capacity information.

⑧ How to check storage capacity.

Press to enter into operation interface, press , press to delete storage information, press at last to confirm.

The following additional instructions are for optional SD card functions:

10.AVI/JPG playback.

If add SD card function to door phone system, user can check recording videos or pictures by activating this function.

11.SD storage usage.

User can check storage usage of SD card by activating this function.

12.Format SD card

User can delete all the information stored in the card.

13.Default setting

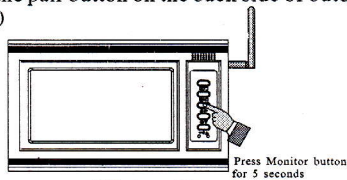
Function operation instructions

Firstly,connect the equipments with electricity and check if code has been paired for the two units , after the outdoor camera has been connected with power adapter and then to electricity, indoor monitor has been connected to electricity,press Monitor button and Talk button on indoor monitor to check if there have signals for communications for the two units.

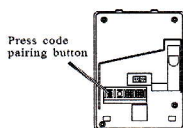
Code pairing instruction

If the two units have no code pairing, or user changes any one of the indoor and outdoor units that need to do code pairing for the two units, please do it as following:

- 1.Make a long press (about 5 seconds) on Monitor button until you can see "please press pair key on sensor side" (Pic 1)
- 2.Press the pair button on the back side of outdoor camera within 10 seconds. (Pic 2)



(Picture 1)



(Picture 2)

User can adjust image quality, volume and information showed in screen to hit the spot as the menu operation instruction.

When outdoor visitors press CALL button on outdoor camera, indoor monitor will ring out, indicator light will gleam and image will display at the same time.

House owner operates as follows:

1. Press UNLOCK button to release the lock which is connected with door phone system.
2. Press INTERCOM button to talk with outdoor visitor.
3. If house owner do not want to receive outdoor visitor after monitoring, do not do any operation.

Video image will shut off automatically and return to standby state after 45seconds. After it shuts off, owner should press MONITOR button again to continue display. During monitoring state, another press on MONITOR button will interrupt monitoring state.

Monitor and Intercom operation

Indoor owner can press MONITOR button at any time when indoor monitor is under standby state to watch video image of front door, and color light will gleam at the same time. After MONITOR operation, owner can press INTERCOM button to activate conversation between indoor unit and outdoor unit. LCD screen will close automatically and return to standby state after 60 seconds.

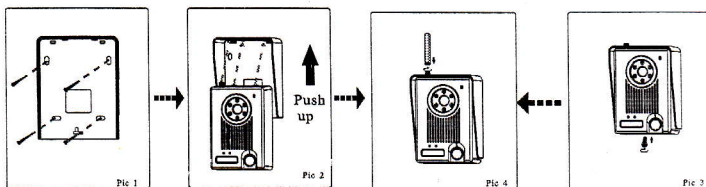
Unlock operation

For safety purpose, the lock can be released only when outdoor visitor presses CALL button or indoor monitor is under Monitor state, it will not response to other operation.

Note: SD card function is an additional function for video doorphone, ordinary wireless door phone equipment does not have this function.

V. Installation Instruction

Installation instruction for outdoor unit



Recommended installation height is 1.5m-1.7m.

1. Separate the bracket, take the camera out from it, use screws in accessories package to fix mounting bracket onto the wall. (Pic1)
2. Fix the camera into the bracket and then push it up to match them together. (Pic2)
3. Use the screws to fasten it. (Pic3)
4. Fix the antenna to screw bolt and fasten it. (Pic4)

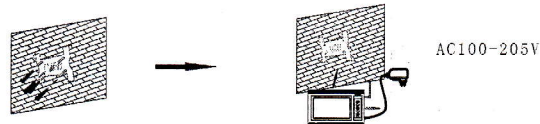
NOTE:

1. Do not install the outdoor unit where it will be exposed to direct sunlight or any strong reflected light or rain.

NOTE:

1. Do not install the outdoor unit where it will be exposed to direct sunlight or any strong reflected light or rain.
2. Do not install the outdoor unit where it will be subjected to extremes of dust or moisture, do not install it near to acid oxides, or any harmful gas which might cause malfunction.
3. Do not install the outdoor unit in a location where the lens filter is likely to get scratched or very dusty.
4. Check cables are connected correctly and camera unit is firmly installed.

Installation instruction for indoor unit



Recommended installation height is 1.5m to 1.7m.

1. Fix the wall-mounting bracket in the best place by 4 screws and fasten it.
2. Fix the indoor monitor onto the bracket and make them match well.

Note:

1. Do not install near other electronic equipment such as computer, TV, video recorder as these may cause radiated interference to the unit.
2. Do not drop or shock the unit.
3. Do not spray water or place any flame onto the unit.
4. Remove the power cord from the wall socket when it is not used for long period.
5. This apparatus is designed for moderate climate. Do not use in high humidity, dusty, dirty areas.

VI. Specifications

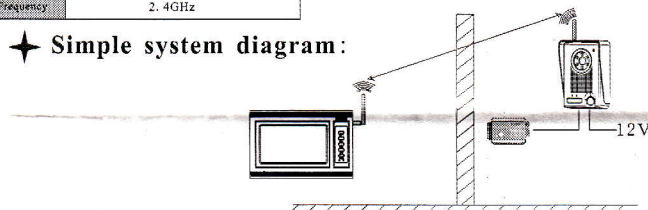
Outdoor Camera

Power supply	DC12V
Resolution	420 TV line
Camera	1/4 Color
Lens and Angle	F6.0, about 69 degree
The lowest degree of illumination	1.5 LUX
Light Source	6 white light LEDs
Power Consumption	Standby: 0.1W Working: 5W
Frequency	2.4GHz

Indoor Monitor

Power Supply	DC15V/AC100V-250V
Camera Tube	7" LCD
Resolution	1440X234L
Ring type	Five ring tones
Power Consumption	Standby: 130mW Working: 14W

Simple system diagram:



X. Cautions

- All part should be protected from violent vibration.
- Do not match our products with other video door phones produced by other factories.
- Please do the cleanness by using soft cotton cloth, do not use organic or chemical impregnate, but a little pure water or dilute soap water to clean dust.
- Image distortion or voice interference may occur if video door phone is too closed to magnetic place or near to radiation.
- Please do not store the products in extreme hot or cold temperature which can shorten the life of electronic devices or distort/melt certain plastics or cause malfunction.

IX. Trouble Shooting

Problem	Check point	Operation
Unable to start the products	Is it connected to power?	Connect both of the units to power
No voice between the two units	If the volume is adjusted to the least?	Enter into menu operation interface, and adjust volume to be suitable
Image is too dark or white	If the brightness and contrast are not adjusted to the best?	Enter into menu operation interface, and adjust brightness and contrast to be suitable
Image is flashing or noise	If the indoor device is close to TV set, fluorescent lamps, mobile phone, which has electronic and magnetic wave?	Keep the devices off these things which has electronic and magnetic wave
Indoor monitor shows no signal image	If the outdoor camera doesn't connect the power?	Connect it with power
	If the outdoor camera is far away from indoor monitor?	Keep the distance within 60 meters (stopped by multi-wall)
	If there is other strong magnetic space bother?	Put the indoor device out of the strong magnetic space
	If code pairing step has not been done?	Do code pairing step as instruction