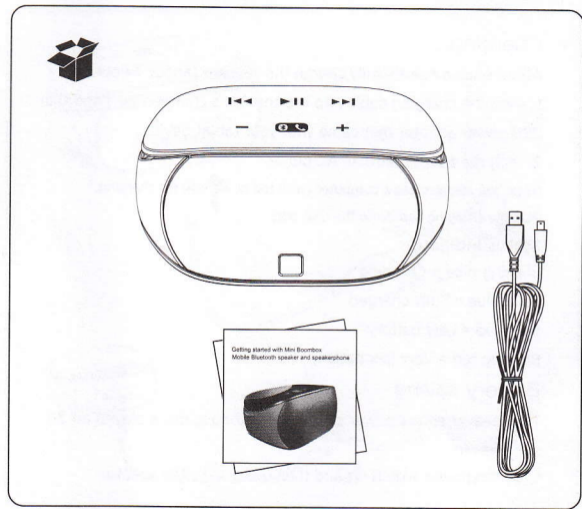
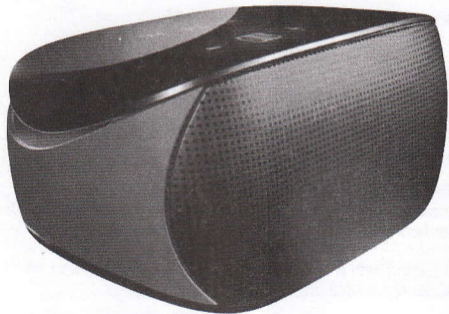
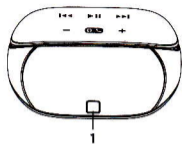


Getting started with Mini Boombox Mobile Bluetooth speaker and speakerphone





Features

1. Status indicator (Power On/Off, Battery, and Pairing)
2. Power On/Off
3. Mini-USB Charging port
4. Auxiliary-in jack
5. Previous track
6. Play/Pause or Microphone mute/unmute (in-call)
7. Next track
8. Microphone
9. Volume down
10. Pair or phone button
11. Volume up

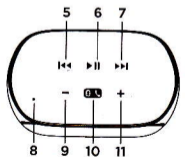
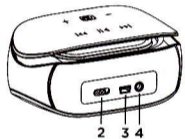


Table of Toxic and Hazardous Substances/Elements and their Content

Head Set 耳机麦克风						
有毒有害物质或元素						
部件名称	铅 (BP)	汞 (Hg)	镉 (Cd)	六价铬 (Cr(VI))	多溴联苯 (PBB)	多溴二苯醚 (PBDE)
电缆 Cable	×	○	○	○	○	○
电路板组件 PWAs	×	○	○	○	○	○
塑料外壳 Plastic enclosure	○	○	○	○	○	○
塑料部件 Plastic parts	○	○	○	○	○	○
金属部件 Metal parts	×	○	○	○	○	○

Speaker 音箱						
有毒有害物质或元素						
部件名称	铅 (BP)	汞 (Hg)	镉 (Cd)	六价铬 (Cr(VI))	多溴联苯 (PBB)	多溴二苯醚 (PBDE)
电缆 Cable	×	○	○	○	○	○
电路板组件 PWAs	○	○	○	○	○	○
塑料部件 Plastic parts	○	○	○	○	○	○
木制部件 Wood parts	×	○	○	○	○	○
金属部件 Metallic elements	×	○	○	○	○	○

○ =表示该有毒有害物质在该部件所有均质材料中的含量均在 SJ/T11363-2006 标准规定的限量要求以下。

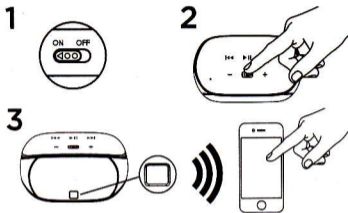
× =表示该有毒有害物质至少在该部件的某一均质的含量超出 SJ/T11363-2006 标准规定的限定要求。

表中标有“×”的所有部件都符合欧盟 ROHS 法规

“欧洲议会和欧盟理事会 2003 年 1 月 27 日关于电子设备中限制使用某些有害物质的 2002/95/EC 号指令”

注：环保使用期限的参考取决于产品正常工作的温度和湿度等条件

If pairing with a computer, specify the Mini Boombox as the audio out



Setup

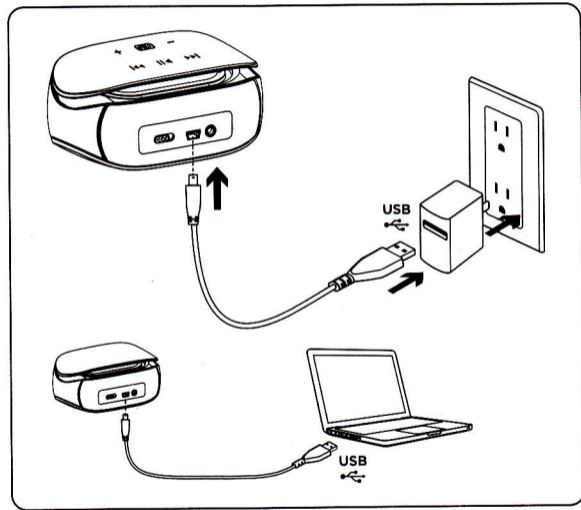
To play audio from a Bluetooth device, you need to pair the device with the speaker. You can pair up to eight devices.

1. On your Bluetooth device, turn on Bluetooth and scan for devices in its Bluetooth menu.
2. Turn on the speaker. When powering up for the first time, the speaker is discoverable for 2 minutes and is ready for pairing. The Status indicator blinks red and blue.
3. When "Mini Boombox" appears on the device list of your Bluetooth device, select the Mini Boombox. (If a pass code is requested, enter **0000**.) The Bluetooth status light turns solid blue after pairing is established. The speaker is ready to play music.

Note: If pairing times out (the Bluetooth status light stops blinking red and blue), press and hold the Pair or Phone button until the Bluetooth status light blinks red and blue again. Repeat step 3.

Pairing additional Bluetooth devices

Press and hold the Pair or Phone button until the Bluetooth status light blinks red and blue. Repeat steps 1 and 3 above.



Charging

About once a month, fully charge the speaker (about 4 hours).

1. Plug the charging cable into the speaker's charging port and the USB power adapter that came with your tablet device.
2. Plug the adapter into an AC outlet.

Note: You can also use a computer (with the power on) for charging.

Plug the charging cable into the USB port.

Status indicator:

Blinking blue = Charging

Solid blue = Fully charged

Solid red = Low battery

Blinking red = Very low battery

Battery saving

The speaker enters power saving mode if no audio is played for 30 minutes.

Slide the power switch off and then on to wake the speaker.

Troubleshooting

The speaker doesn't work or it won't pair

- Try moving your device closer.
- Is the speaker turned on and charged?
- Turn the speaker off and then on to wake it.
- Is Bluetooth enabled on your device or computer?
- Try repeating the setup procedure in this guide or pair with a different Bluetooth device.
- The speaker plays music from one device at a time. Unpair the device not being used. (Refer to your device documentation for help.) Pair a new device using the setup procedure.
- If pairing with a computer, specify the Mini Boombox as the audio out device on the computer.