

LUCKY WIRELESS FISH FINDER

OPERATION GUIDE



We are really appreciated that you purchase our products! In order to make the users can give the machinery performance into full play and well utilize this machine, we are pleased to ask the users to read the operating instruction carefully before operating the machine. If you have any question in use, please feel free to contact the

WIRELESS FISH FINDER

OPERATION GUIDE

1 PRODUCT OVERVIEW

This amazing product is especially designed for amateur and professional fishermen alike, to find out the location of fish, depth and bottom contour of water.

The unit can be used in ocean, river or lake and is fantastic for detecting schools of fish in any particular area. Using amazing and innovative technology, this portable fish finder is the ideal tool to bring the fish to you!

2 HOW SONAR WORKS

Sonar technology is based on sound waves. The system uses sonar to locate and define structure, bottom contour and composition, as well depth directly below the transducer. The transducer sends a sound wave signal and determines distance by measuring the time between the transmission of the sound wave and when the an object; it then uses the reflected signal to interpret location, size, and composition of an object.



fig.1



fig.2

3 DISPLAY VIEW

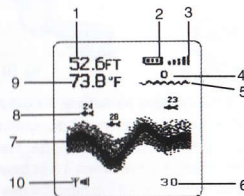
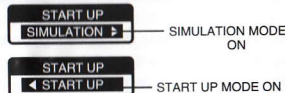


fig.3

- | | |
|------------------------------|-----------------------------|
| 1 Water Depth | 6 Lower Zoom Range |
| 2 Battery Strength Indicator | 7 Bottom Contour |
| 3 Sensitivity Indicator | 8 Fish Icon with Depth |
| 4 Upper Zoom Range | 9 Water Temperature |
| 5 Water Surface Line | 10 Sensor connect indicator |

4 Powering ON and OFF

Press and release POWER-MENU to power the unit on. Press and hold POWER-MENU until the unit shuts down to power off. When Unit powers on, the Start Up menu temporarily appears. From this menu, select either Start-Up for on-the-water use, or Simulation for learning to use the system with simulated sonar data. The Start-Up menu disappears after several seconds and the Unit begins operation.



5 Accessing Menu Features

A simple menu system accesses unit's adjustable features. To activate the menu system, press POWER - MENU and a menu appears. Press POWER-MENU repeatedly to access other menus one at a time. When a menu is on the display, use the right and left arrow keys to adjust the menu. Menus automatically are removed from the screen after several seconds.

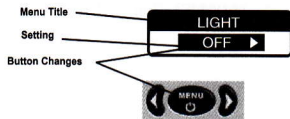


fig.4

5.1 Light



(Setting Saved in Memory)

Press POWER-MENU until the LIGHT menu appears. Select either OFF or ON to activate the backlight at the desired level.

Note: Continuous backlight operation significantly decreases battery life on Unit Portables.

5.2 Sensitivity



(Setting Saved in Memory , 1 to 5)

Press POWER-MENU until the SENSITIVITY menu appears. Select a higher number to show smaller sonar returns on-screen, or a lower number to remove clutter from the screen. Adjusting Sensitivity also affects how sonar returns are identified as Fish Icon Symbols - more fish will be detected at a higher setting, fewer at a lower setting.

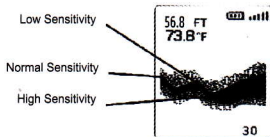


fig.5

5.3 Depth Range Menu



(Setting Saved in Memory)

Press POWER - MENU until the Depth Range menu appears. Select AUTO to have the Unit automatically select the Depth Range or manually select 5, 10, 20, 30 or 40 meters. This locks the depth range to a specific setting.

Note: In manual operation, if the depth is greater than the depth range setting, the bottom will not be visible on-screen. Select AUTO to return to automatic operation.

5.4 Zoom



(Setting Saved in Memory)

Press the POWER-MENU key until ZOOM appears. Select a number to magnify the area around the bottom thus revealing fish and structure close to the bottom that may not be visible in typical operation.

In Zoom, the Unit continually changes the upper and lower Depth Range to keep area just above and below the bottom on the display. Select Off to return to normal operation. (OFF, 5 to 40 Meters)

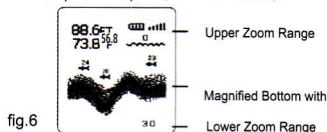


fig.6

5.5 Depth Alarm



(Setting Saved in Memory)

Press POWER-MENU until the DEPTH ALARM menu appears. Select OFF for no Depth Alarm; select a number to set the alarm depth point and turn it on. An audible alarm sounds when the depth is equal to or less than the setting.

5.6 Fish Alarm



(Setting Saved in Memory, Defaults to OFF)

Press POWER-MENU until the FISH ALARM menu appears. Select OFF

for no fish alarm, or select the fish icon to set the fish alarm and turn it on.(OFF, Large, All)

5.7 Fish Icon



(Setting Saved in Memory)

Press POWER-MENU until the FISH ICON menu appears. Select either OFF to view "raw" sonar returns, or ON to take advantage of Unit's ability to identify sonar returns that are determined to be a fish.(ON,OFF)

There are two fish symbol sizes. FISH ID displays a small fish symbol when it thinks a target is a small fish, and it thinks a target is a big fish, it will display a big fish.

Fish Icon



5.8 Chart Speed



(Setting Saved in Memory, 1to4)

Press POWER-MENU until the CHART SPEED menu appears. Select a setting from 1-4 to increase or decrease the chart speed, where 1 is the slowest and 4 is the fastest chart speed.

5.9 Depth Unit



(Setting Saved in Memory)

Press POWER-MENU until the DEPTH UNIT menu appears. Select either FT or M to set the unit of depth.

5.10 Temperature Unit



(Setting Saved in Memory)

Press POWER-MENU until the TEMP UNIT menu appears. Select either °C or °F to set the unit of temperature.

6. USING THE WIRELESS SENSOR

Use the wireless sonar sensor is very easy for user, just simply attach the sensor to the end of your fishing line and cast it into the water as your normal float or lure.

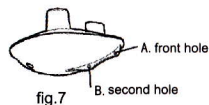


fig.7

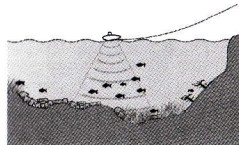


fig.8

6.1 You can tie your fish reel line to the front hole in the wireless transducer. If you want to use the wireless transducer as a stationary float, use the second hole to attach your hook using a lighter weight line. but A obstacle will break the lighter line easily, for this reason, we suggest you not to pull the lighter weight line if unnecessary. Slip line techniques are not recommended because will increase the risk of losing the wireless transducer. If you do use the slip line method, use a lighter weight line after the lower stop, unable get back of the wireless transducer if the lower line with hook breaks away.

6.2 You will increase the risk of breaking your line if you use light test pound line on your reel. The transducer in water is positively buoyant. The maximum amount of weight for any attachment to the transducer is approximately 6 grams, and includes the combined weight of any hook, line, weight swivel/snap swivel and bait that is attached to the wireless transducer. over 5.7g will submerge the wireless sonar sensor, causing the signal loss.

7.How to replace the CR-2032 battery

7.1 Remove the battery door of the wireless sonar sensor, and press the lock-block of the battery holder and the battery will flip pls check the picture.(fig.9, fig.10)

7.2 Make sure that the 0-ring in the battery compartment is present, positioned correctly in the grooves, and free of debris before reinstalling the battery door.



fig.9



fig.10

NOTE:The bottom of the wireless transducer should not be handle during sonar operation, as this may cause physical discomfort and may result in personal injury in the form of tissue damage. Handle the wireless transducer only by the antenna tower when it has been in the water.

NOTE:The wireless transducer is not intended for use by children young than 6years old without adult supervision as the transducer may represent a choking hazard to small children.

NOTE:When the fish finder receive the signal from wireless sensor the signal indicator (Y |||) will display on the screen. The max RF distance the unit is 60 meters unless the water is smooth. The signal indicator will disappear if the distance between the fish finder and the wireless sensor over 60 meters. The wireless transducer has contacts that perceive when the device is immersed in the water. These contacts turn on the sonar transmitter/receiver and begin transmitting the sonar information via Radio Frequency to the display. The wireless transducer automatically stops using power a few seconds after being pulled out of the water.

NOTE:Do not place the wireless transducer in a wet area when not in use as this will turn on the wireless transducer and shorten its usable life. Store the wireless transducer in a dry area when not in use to conserve power. Never place the unit in a wet area of a boat or on a metal surface that could accidentally power it on.

NOTE:If the unit was used in salt water, rinse it with fresh water before storing it.

NOTE:If the handheld device fails to receive signals from the wireless sensor, it will stop showing on the screen. In any case, if the handheld device can not receive signals transmitted by the sensor or the sensor is out of water for several seconds, the screen will not show fish and depth meter and sensor connect indicator until the sensor is placed in water again and signals are restored. This machine is a products depending on line of sight. So the barrier between the handheld device and the sensor can lead to signal loss.

NOTE:Incorrect reading may appear in water areas with depth less than 0.7meter. Additionally, considering the sonar physical characters, we suggest you avoid using the products in swimming pools or small-size

enclosed water areas. Dragging the sensor too fast can lead to signal lost. With relatively quite water areas, this products is able to obtain a 160-feet remote-control distance in max; with significant fluctuations on water surface, the distance may be reduced slightly. If you drag the sensor or it floats out of the range, inconsistent signals or even no signals will be transmitted to the handheld. If nothing displayed, please be sure the batteries positive and negative poles are correctly oriented in the holder, also check if the batteries has enough power.

Maintenance for the handheld device

Many factors about anomalous operation have been taken into consideration while designing this fish finder. This effort has ensured that the product is able to work for many years even without regular maintenance. Follow these steps to ensure your fish finder continues to deliver top performance.

- 1) If the unit comes into contact with salt spray, use a soft cloth dampened in fresh water then wipe the affected surfaces.
- 2) Don't use a chemical glass cleaner on the surface! Otherwise, this will scratch the surface. When cleaning the LCD protective lens, use a chamois and mild cleaner. Don't wipe while dirt or grease is on the lens. Be careful to avoid scratching the lens.
- 3) Do not place the unit in a closed car! This will lead to the internal electronics

Parts damaged for the high temperature in hot weather days.

Maintenance for the wireless sensor

- 1) Before store the wireless sensor, please wipe the surface with a soft cloth dampened with fresh water after using the wireless sensor in salt water.
- 2) Rinse the wireless sensor bottom alloy pins with fresh water after using in salt water.
- 3) After store wireless sensor out of the water for a long time, it will take some time to wet it when returned to the water. Small air bubbles can cling to the surface of the wireless sensor and foreclose its normal operation. Wipe the face of the sensor with a wet soft cloth to eliminate them.
- 4) Do not place the unit in a car! This will lead to the internal electronics parts damaged for the high temperature in hot weather days.

Product specification:

- 1) Display: Big Adjustable High-contrast Dot matrix FSTN LCD 128Vx64H
- 2) Display size: 41Wx48H
- 3) Back lighting: On/off White LED
- 4) Power Requirement: 4-AAA alkaline Batteries(not included)
- 5) Measure Unit: Feet and meters
- 6) Sensor Coverage: 90 degrees
- 7) Depth Range Max/Min: 120Feet(40meters)/2Feet(0.7meters)
- 8) Temperature unit: Celsius/Fahrenheit
- 9) Operation temperature: -10°C-50°C
- 10) Storage temperature: -20°C-70°C
- 11) Temperature: Water temperature Sensor included in Wireless Sonar Sensor
- 12) Wireless operational Range: 230Feet(70meters)
- 13) Water switch technology applied: Sensor could shut down when it is out of the water.
- 14) Wireless sensor battery :CR-2032
- 15) Bottom contour: Show true changing of water bottom contour
- 16) Memory: Built-in memory stores sonar setting when the unit is turned off
- 17) Waterproof design: level-4 (spray-water-proof)

Attachments:

- 1) A Wireless Remote Sonar Sensor
- 2) A handheld device with LCD screen
- 3) A operation manual
- 4) A neck strap

