

# INTELLIGENT ALL-IN-ONE-CAMERA

## Manual

### Product features:

Thanks you select our company products, this product USES the latest single chip embedded video monitoring system, With the video, sound recording, AV simulation monitoring, motion detection, infrared night starting, photosensitive induction, circulating storage etc functions in a body, Compared with the traditional AV Analog monitor, It has the dual data protection (without electricity will be automatically preserve, not missing file), the operation is convenient ( plug and play), simple search video data (according to time naming video files), and can be widely used in stores, booth, building, the streets, the family, as well as monitoring range, for so you can better use the product, please read the instruction and if any questions, please inform us or dealers.

### The interface of the products function:

This product has three connection port, respectively is the power cable (12 V), video signal cable, computer connections cable(USB cable)

### Operation methods:

#### 1) The power cable:

The power cable connected to 12 V power, this product began to work and into the video state. Then the output analog signals and AV video to be automatic storage to the built-in TF card and circulation video, according to the size of the TF card, the preservation of the effective time are different. This product also built-in the battery, when the 12V power was pulled out or power failure, don't have to do any operation, it can automatically save the previous video recorded data, ensure file does not lost.

#### 2) Video signal cable:


after connected to the power source, this cable can insert to the display of input port also can be inserted into the DVR input port, both can clearly see what your monitor range, also will be automatic stored what you need the monitor video material. 【 if due to space reasons and need to be wired, also won't affect the video monitoring effect 】

#### 3) USB Cable:

If you want to check the content of the TF card, directly connected to the computer and it can quickly identify and read the video information, can be for your reference or copy as back up .

**Note:** Before use this product, please use a USB cable to connect the computer, format the built-in TF card, and make sure every three months format the TF card one time (Recommended the Kingstone High-speed card).

### Update time:

The system configuration changes as the below chart A4  
Open the product of the CD root directory with the UserSet package, there are five files, double click UserSet applications  ,can appear

as chart A4 interface, according to the customer different environment , it can modify of the different work mode. Connecting a computer and recognition to the portable disk, select the corresponding working mode, click (save Settings and updates for the current time), the size of the video can be modified.

Note: initial system default CIF (352 \* 288) mode.

### Video size:

Motion detection function when static state a video is about 90 MB / 30 minutes, dynamic about 160 MB / 30 minutes

Note: In the general video environment (colour not rich),while all-weather not too much dynamic video given the following reference data.eference data.The actual size will be subjected to the customer comprehensive environment, it might have a certain time difference.

| Flash | VGA(640*480) | CIF(352*288) |
|-------|--------------|--------------|
| 4GB   | 12hrs around | 18hrs around |
| 8GB   | 24hrs around | 36hrs around |
| 16GB  | 48hrs around | 72hrs around |

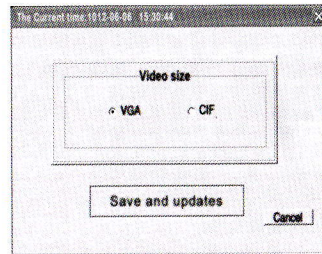
### Troubleshooting:

If the camera were with fault, before repairing, please check the following program to see if correct using, if still function not properly, please contact with distributors or professional maintenance personnel.

#### 1. The monitors no image

All the equipment be connected the power cable is connected? Voltage is correct?

All the DC power equipment the positive and negative polarity is correct?



#### 2. The images are not clear

The monitor is correct adjustment?

The Rear focal length is correct adjustment?

The Lens focal length is correct adjustment?

The Lens surface is clean?

If there is dirt and finger printed in lens, the image quality will be worse. Please use soft cloth or the lens cleaner suite to clean the lens.

#### 3. The images have interference

If there is a camera attachment strong electromagnetic field?

Whether good ground wire grounded?

Whether good signal lines contact?

Wiring whether is correct?

### Note:

#### 1. Please don't take apart the camera by yourself

This camera don't have the customize repair parts for the Customer maintenance. To avoid electric shocks, Please pass to the maintenance technology personnel in charge and do not to remove any screw or shell.

#### 2. Be careful to protect the camera

Careless handling or save, may cause damage to the camera.

#### 3. Do not put a camera in the rain or installed on the too high temperature place.

Such as camera was wet, please turn off the power and instant contact the maintenance staff. Moisture may be damaged cameras and produce shock hazard.

#### 4. Do not use strong cleanser

Do not use finger to touch the sensitive components. If necessary, can use a piece of soft dry cloth with a few alcohol and the dust will be erased. When the camera not in use, please keep the lens or cover to protect the camera components.

#### 5. Please don't put the camera lens face to the Sun

Whatever the camera was used in outdoor or indoor, do not put the camera facing the sun, at the same time also pay attention to see the near position whether there is a spotlight, strong light or reflection effects objects.

#### 6. Please do not use in the improper temperature and power environment

Please do not installed the camera in the high temperature environment. Operating temperature can be -10℃ to 50℃( between 14F to 122F) and humidity below 85%.

#### 7. The camera installed in away from video noise position

When the camera power cable close to other cables or TV receiver, it might produce noise influence. If such case, please reset the camera to other place.

#### 8. If the products information, data damage or loss of the data etc was caused by natural disasters force majeure , such as earthquake, fire, lightning, unstable voltage, Or use bad quality T falsh card, do not undertake any responsibility.