

Before we start, make sure you have the following:

- iDea Pico P100A mini projector
- Pico's tripod
- Pico's remote control
- A phone or laptop connected to your "Home" WiFi
- Your "Home" WiFi password

Setting Up Your Display:

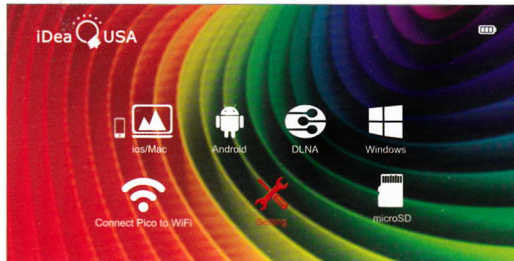
- Screw the tripod to the base of Pico securely.
(Adjust height as required)
- Turn on Pico. (Hold for 3 seconds)
- Adjust focus until Pico's "Home Screen" display is clear

SETUP WIFI

STEP ONE:

Connect Pico to WiFi for using online and connecting your device

1. Turn on Pico. (Hold for 3 seconds)
2. When using the remote control to select WiFi settings on iDea Pico, stay in close proximity and point controller towards infrared sensor. (P1)
3. Using the arrow buttons on the remote control, scroll down and select the "Settings" option on Pico's home screen, by pressing "OK". (P2)

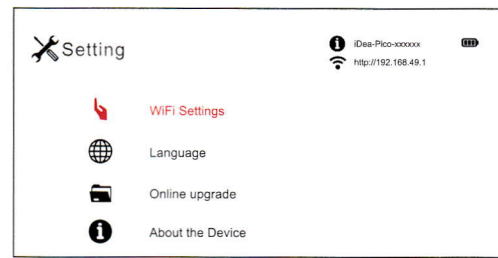


(P2)



(P1)

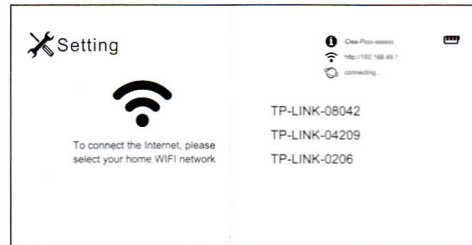
3. In the "Settings" menu, select "WiFi Settings". (P3)
4. Pico will now search for local WiFi networks in range. (P4)
5. Select your local WiFi network from the list generated. (P5)
6. Enter the password for this WiFi network if required and then select "enter". Once successfully connected, the selected WiFi network will appear top right of the screen. (P6)



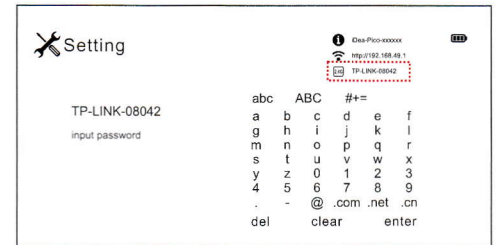
(P3)



(P4)



(P5)



(P6)

STEP TWO:

Now your Pico is successfully connected to WiFi you can...

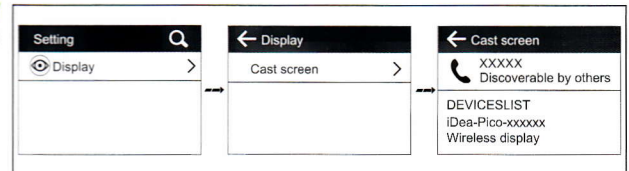
• Mirror your Android device using MiraCast (P7):

Compatible with: version 4.2 and above

- (1) From Pico's "Home Screen" select the mobile device option you wish to share content from (for Android device select "Android").
- (2) From the "Setting" menu on your Android device select "Display".
- (3) Tap "Cast Screen" and ensure "Enable wireless display" is ticked.
- (4) Select "iDea-Pico-xxxxxx" from list to connect.

Android

(P7)



-2-

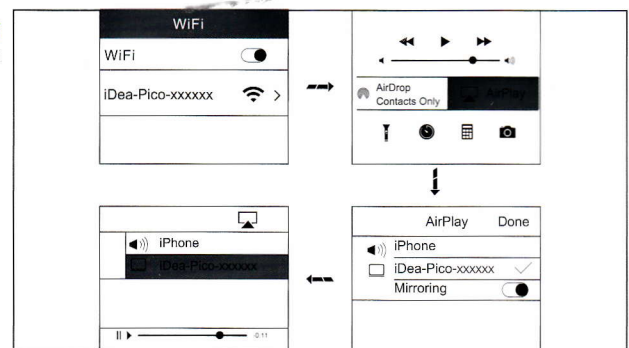
• Use AirPlay on your iOS device (P8):

Compatible with: iOS 7.0 or above

- (1) From Pico's "Home Screen" select the mobile device option you wish to share content from (for Apple device select "iOS/Mac").
- (2) On your iOS device go to "Settings," open "Wi-Fi" and connect to "iDea-Pico-xxxxxx" from the list. Ensure Pico is still connected to your home WiFi as per step one.
- (2) Swipe up from the bottom of your iOS device's screen to show the "Multitasking Bar".
- (3) Tap the AirPlay icon.
- (4) Select "iDea-Pico-xxxxxx" from list and enable "Mirroring".

iOS

(P8)



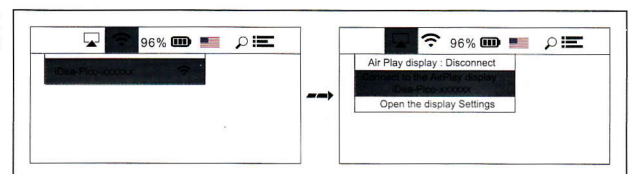
• Cast your MacOS device (P9):

Compatible with: OS X Mountain Lion (version 10.8) and above

- (1) From Pico's "Home Screen" select the mobile device option you wish to share content from (for mac device select "iOS/Mac").
- (2) On your Mac open Wi-Fi networks and connect to "iDea-Pico-xxxxxx" from the list. Ensure Pico is still connected to your home WiFi as per step one.
- (3) Click on the "AirPlay" icon located on the Menu Bar.
- (4) Select "iDea-Pico-xxxxxx" from list to connect and click "Done".

Mac

(P9)



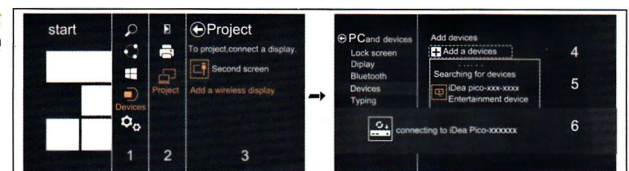
• Mirror your Windows device using MiraCast (P10):

Compatible with: version 8.1 and above

- (1) From Pico's "Home Screen" select the mobile device option you wish to share content from (for windows device select "Windows").
- (2) On your Windows device click on "Start" and select "Devices" from the menu.
- (3) Select "Project" and then "Add a wireless display".
- (4) To setup Pico "Add a device" and then select "iDea-Pico-xxxxxx" from list to connect.

Windows

(P10)

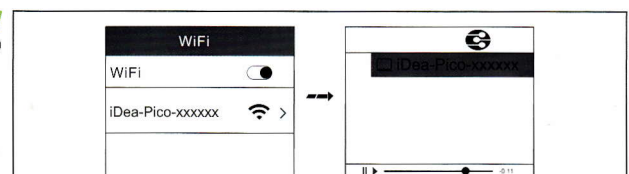


• Cast your smart device using DLNA (P11):

- (1) From Pico's "Home Screen" select the DLNA device option.
- (2) Ensure your device is connected to Pico via Wi-Fi ("iDea-Pico-xxxxxx"). Ensure Pico is still connected to your home WiFi as per step one.
- (3) In the third party apps that support DLNA press "DLNA" and select "iDea-Pico-xxxxxx".

DLNA

(P11)



-3-

Contents

Important Safety Instructions

Warnings.....	3
Regulatory Guidelines.....	4

Introduction

Key Benefits.....	6
-------------------	---

Product Overview

Product Overview.....	7
Packing List.....	8

Getting Started

Turn On/Off the Pico.....	9
Focus Adjustment.....	9
Charging.....	9

Setting

Home Screen.....	10
iDea-pico+WiFi.....	10
ios.....	11
Mac.....	12
Windows Miracast.....	13
Android Miracast.....	14
DLNA.....	15
Micro SD.....	16
Setting.....	17

Technical Specifications.....	18
-------------------------------	----

Important Safety Instructions

Please take the time to carefully read and follow these important safety instructions. They will help you set up and operate your system properly and enjoy its advanced features. Save this guide for future reference.

Warnings:



- **Carrying and Handling iDea Products.** iDea Products contain sensitive components. Do not drop, disassemble, open, crush, bend, deform, puncture, shred, microwave, incinerate, paint, or insert foreign objects into iDea Products.
- **Avoiding Water and Wet Locations.** Do not use iDea products in rain or other wet locations. Take care not to spill any food or liquid on iDea Products. In case iDea products get wet, unplug all cables, turn off iDea product before cleaning, and allow it to dry thoroughly before turning it on again. Do not attempt to dry iDea products with an external heat source, such as a microwave oven or hair dryer. An iDea product that has been damaged as a result of exposure to liquids is not serviceable and not covered under warranty.
- **Repairing or Modifying iDea Products.** Never attempt to repair or modify iDea Products yourself. Disassembling iDea Products may cause damage that is not covered under the warranty. iDea products do not contain any user-serviceable parts. Service should only be provided by iDeaUSA. If iDea products have been in contact with liquids, punctured, or subjected to a severe fall, do not use it until it is serviced by iDeaUSA. For service information, please visit: support.iDeaUSA.com.
- **Battery Replacement.** The rechargeable battery in iDea products should be replaced only by iDeaUSA. For more information about battery replacement service, please visit: support.iDeaUSA.com.
- **Using Connectors and Ports.** Never force a connector into a port. Check for obstructions on the port. If the connector and port don't join with reasonable ease, they probably don't match. Make sure that the connector matches the port and that you have positioned the connector correctly in relation to the port.
- **Keeping iDea Products Within Acceptable Temperatures.** Avoid dramatic changes in temperature or humidity when using iDea products, as condensation may form on or within iDea Products. Don't leave iDea products in your car, because temperatures in parked cars can exceed acceptable temperatures. When you're using iDea products or charging the battery, it is normal for iDea products to get warm. The exterior of iDea Products functions as a cooling surface that transfers heat from inside the unit to the cooler air outside.

- **Keeping the Outside of iDea Products Clean.** Handle your iDea products with care to maintain its appearance. To clean iDea products, unplug all cables and turn off iDea products. Then use a soft, slightly damp, lint-free cloth. Avoid getting moisture in openings. Don't use window cleaners, household cleaners, aerosol sprays, solvents, alcohol, ammonia, or abrasives to clean iDea products.



Contains small parts which may be a choking hazard. Not suitable for children under age 3.

Supervise young children to ensure they do not play with the product. Children may not comprehend the presence of potential risks. Batteries and small parts represent potential choking hazards. Keep batteries out of reach of children. If a battery is swallowed, seek medical help immediately. Keep packaging materials away from children as there is danger of suffocation.



This symbol means the product must not be discarded as household waste, and should be delivered to an appropriate collection facility for recycling. Proper disposal and recycling helps protect natural resources, human health and the environment. For more information on disposal and recycling of this product, contact your local municipality, disposal service, or the shop where you bought this product.

Regulatory Guidelines



This device complies with part 15 of the FCC Rules. Operation is subject to the following two conditions:

- (1) This is device may not cause harmful interference.
- (2) This device must accept any interference received, including interference that may cause undesired operation.

Warning: Changes or modifications not expressly approved by the party responsible for compliance could void the user's authority to operate the equipment.

This device meets the FCC Radio Frequency Emission Guidelines and is modifications with the FCC. This device has been tested and found to comply with the limits for a Class B digital device, pursuant to Part 15 of the Federal Communication Commission (FCC) Rules.

These limits are designed to provide reasonable protection against harmful interference in residential installation. This device generates, uses and can radiate radio frequency energy and if not installed and used in accordance with the instructions, may cause harmful interference to radio communications. However, there is no guarantee that interference will not occur in a particular installation. If this device does cause harmful interference to radio or television reception which can be determined by turning the device off and on, the user is encouraged to try to connect the interference by one or more of the following

measures:

Reorient or relocate the receiving antenna.

Increase the separation between the device and receiver.

Connect the equipment to an outlet on a circuit different from the one the receiver is connected to.

Consult an experienced radio/TV technician for help.

Software License Agreement

Use of iDea products constitutes acceptance of the iDeaUSA and third-party software license terms found at: www.iDeaUSA.com.

Introduction

Key Benefits

- *Pure Entertainment*

Enjoy an immersive experience at a size you can all see

- *Wireless Connectivity*

Share, present & play anywhere without messy cables

- *So Small ... So Powerful*

Enjoy crisp 720p high resolution image quality at 80 ANSI lumens

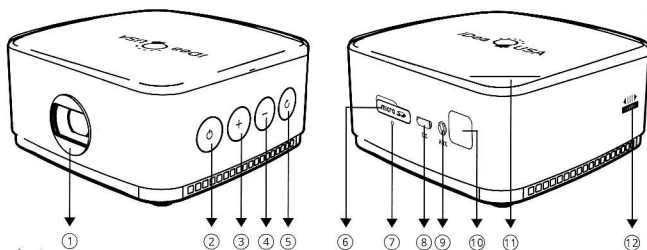
- *Your Pocket Travel Companion*

Weighing less than 1 pound, it's lightweight and handheld, perfect for work on-the-go

- *For Work & Play*

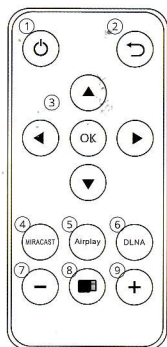
Enjoy movie night from the comfort of your covers, inside and outside

Product Overview



- ① Lens
- ② Power On / Off
- ③ Up/Vol+; left; Fast Backward
- ④ Down/Vol-;Right;Fast Forward
- ⑤ Mode Switch/ Return
- ⑥ Micro SD
- ⑦ Speaker
- ⑧ Micro USB (DC Charging)
- ⑨ AUX
- ⑩ Infrared receiver
- ⑪ Battery Level indicator
- ⑫ Focus

Infrared Remote Control Panel

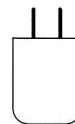


- ① Power Button
- ② Return
- ③ Direction and OK key
- ④ MIRACAST
- ⑤ Airplay/iOS
- ⑥ DLNA
- ⑦ Volume down
- ⑧ TF
- ⑨ Volume up

Packing List



iDea Pico



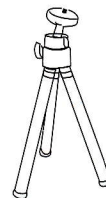
Charger



Car Charger



USB Cable



Tripod



User Guide



Infrared Remote control



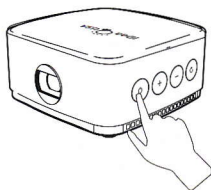
Portable Bag

If an included item is missing, or if any part of your Pico fails to operate properly, Please contact us.

Getting Started

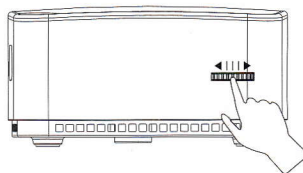
Turn On/Off Pico

Hold the Power Button for 3 seconds to turn on / off projector.

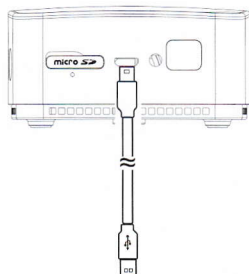


Focus Adjustment

Scroll Focus to adjust the focal length and get a clear image output.

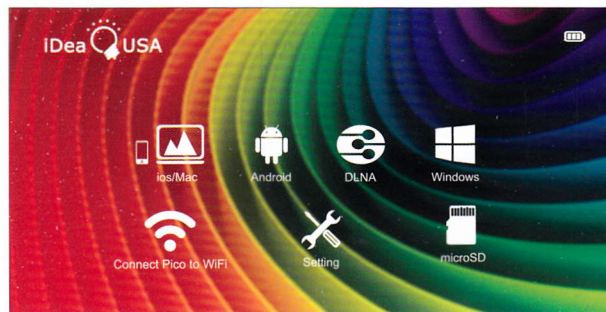


Charging

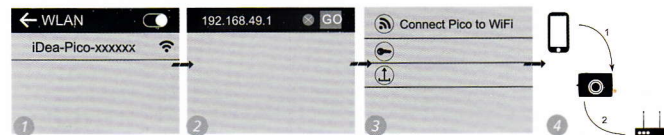


Setting

Home screen



iDea-pico+WiFi



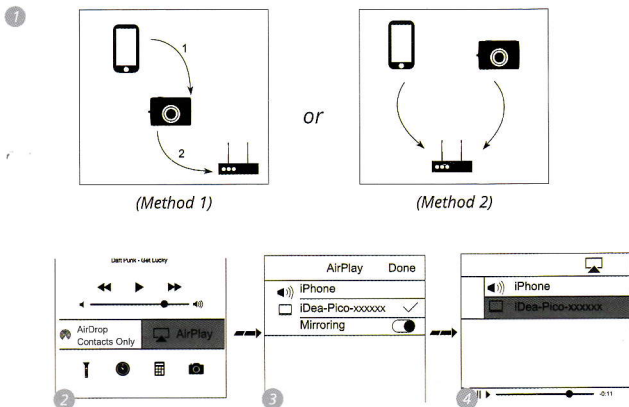
From Pico's "Home Screen" select the "Connect Pico to WiFi" device option.

1. Enable your phone or computer's Wi-Fi.
2. Search for "iDea-Pico-xxxxxx" Wi-Fi hotspot and connect to it.
3. Open Internet browser on your phone or computer.
4. Enter the IP address <http://192.168.49.1>
5. Press "Connect Pico to WiFi"
6. Search for your home router's WiFi and connect to it.
4. Now the iDea-pico projector has been connected to your home WiFi. Your phone or computer is still connected to the iDea-pico projector's WiFi but it shall be able to access the Internet now as long as your home WiFi has access to the Internet.

ios

Supports iOS 7.0 or above

You can cast your iOS devices local images/videos or third party video data to the Projector.



From Pico's "Home Screen" select the mobile device option you wish to share content from (for Apple device select "iOS/Mac").

1 (Method 1)

The iDea-pico projector has been connected to your home WIFI, and your phone is connected to the iDea-pico projector's WIFI.

(Method 2)

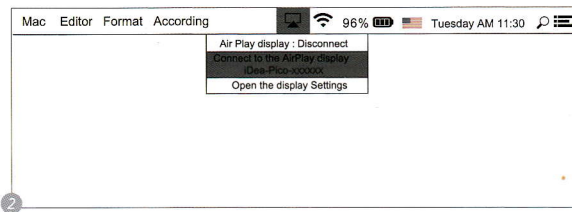
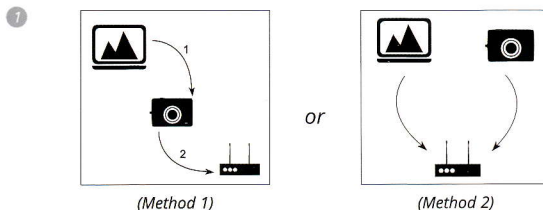
Both your phone and the iDea-pico projector are connected to your home WIFI.

- 2 Swipe up from the bottom of your iOS device's screen to show the "Multitasking Bar," Press
- 3 Select "iDea-Pico-XXXXXX", and enable Mirroring if you prefer (please refer to the iOS device manual for the details of AirPlay and Air Mirroring), then press Done.
- 4 Or in the third party video software that supports AirPlay press

Mac

Supports 2012 models and newer / OS X Mountain Lion (version 10.8) and above

You can cast your MacOS devices local images/videos or third party video data to the Projector



From Pico's "Home Screen" select the mobile device option you wish to share content from (for mac device select "iOS/Mac").

1 (Method 1)

The iDea-pico projector has been connected to your home WIFI, and your mac is connected to the iDea-pico projector's WIFI.

(Method 2)

Both your mac and the iDea-pico projector are connected to your home WIFI.

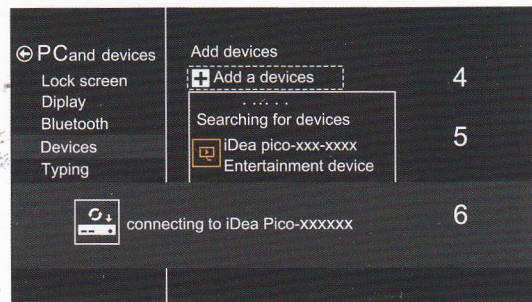
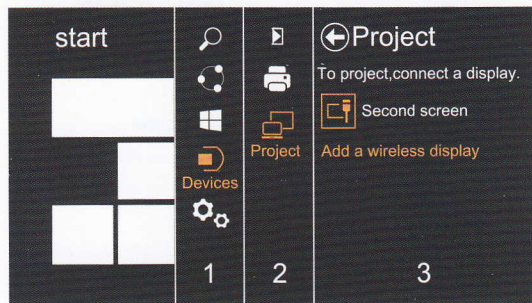
- 2 Select "iDea-Pico-XXXXXX", Press "Done".

Windows Miracast

Supports version 8.1 and above

With a Miracast enabled Windows device, you can mirror your content to the Projector.

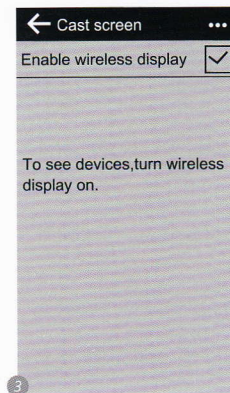
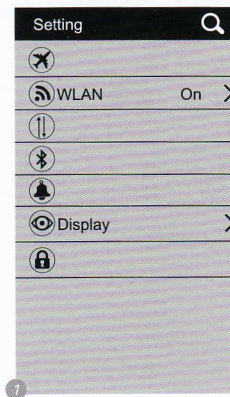
From Pico's "Home Screen" select the mobile device option you wish to share content from (for windows device select "Windows").



Android Miracast

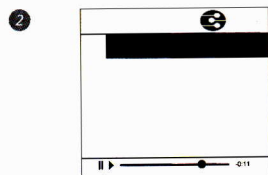
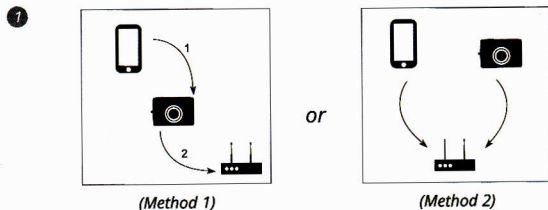
Supports version 4.2 and above

With a Miracast enabled Android device, you can mirror your content to the projector.



DLNA

With DLNA you can cast your smart devices local images/video or the third party video data to the Projector.



From Pico's "Home Screen" select the DLNA device option.

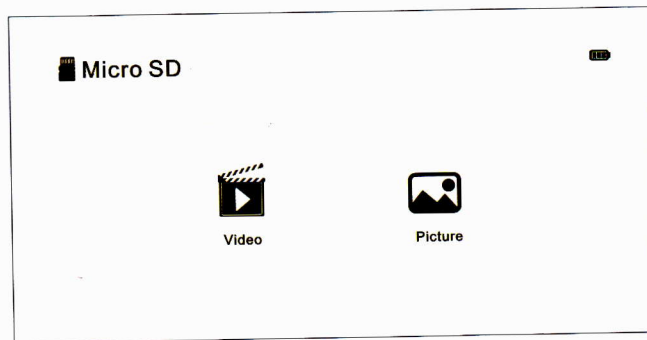
- 1 (Method 1)
The iDea-pico projector has been connected to your home WIFI, and your phone is connected to the iDea-pico projector's WIFI.

(Method 2)
Both your phone and the iDea-pico projector are connected to your home WIFI.

- 2 In the third party apps that support DLNA press and select iDea-Pico-xxxxxx.

Micro SD

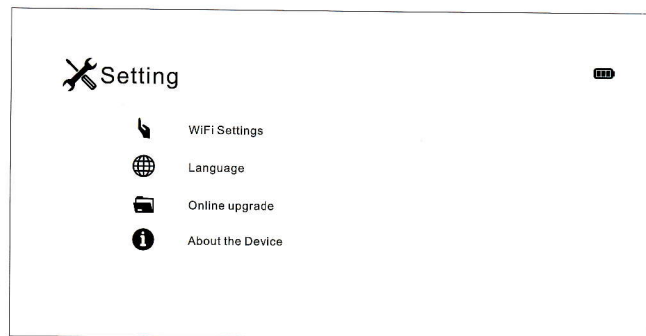
Insert TF card, Pico will automatically identify media content, as shown below:



TF card supported formats

Audio	*.mp3	*.wma	*.wav		
Video	*.avi	*.mp4	*.ts	*.rmvb	*.mpeg
	*.wmv	*.mov	*.flv	*.rm	*.3gp
	*.mpg	*.vob	*.mkv		
Picture	*.jpg	*.png	*.jpeg		

Setting



Technical Specifications

Main Function	Dimensions	2.95*2.95*1.47 inch
	Focus	Handing
	Operating Temperature	0°C~ +40°C
	Tcase	≤40°C
	Projector	Ongine
	Led Driver	DPP2607
	WIFI	RTL8192DU 802.11 a/b/g/n 2.4G to 5GHz 2T2R
	Battery	5000mAh
	Fan	5V/0.1A
Optical	Projector Technology	DLP
	Lamp	RGB LED
	Brightness	80 ANSI lumens
	Resolution	480P Max to 720P/1080P
	Displayable Colors	100% NTSC color gamut
	Image Size (Diagonal)	1m---37.8
	Contrast Ratio	1000:1
	Throw Ratio	1.19:1
	Aspect Ratio	16:9
Interface	LED Life	≥25000H
	Micro USB	Power DC (5.2V/2A)
	IR Remote	Support
	TF Card	Support
	Upgrade	Support