

Runbo



Important Notice



To avoid dangerous or illegal use, Plz read following information carefully before you start using the Runbo mobile phone.

- **Road safety** Plz obey traffic rules, do not use mobile phone when driving.
- **Power on safely** When using mobile phone will cause impact or danger, do not power on the device.
- **Power off in hospital** Follow all restrictions. turn off the phone near medical equipment.
- **Power off in aircraft** Follow all restrictions. wireless devices can cause interference.
- **Gasoline station** Do not use the device in the gasoline station area.
- **Qualified repairing** Only qualified repairer can open and repair the device.
- **Accessories and battery** Only qualified accessories and battery can be used.

X3 X5

● Smartphone ● Waterproof ● Walkie Talkie

● 智能 ● 三防 ● 对讲

www.Runbo.net
Tintele Global Co., LTD

Parts name

● FRONT X3

- Walkie Talkie Antenna
- Receiver Sensor
- Touch panel
- Front Camera
- LED

● FRONT X5

- Walkie Talkie Antenna
- Receiver Sensor
- Touch panel
- Back key
- Menu key
- Home key
- Search key
- Front Camera
- LED

● Display menu key function

⏏ Home key

Go back to home screen,
Press and hold to pop up recent applications screen.

☰ Menu key

Press to view menu options.

🔍 Search key

Connect to website search engine.

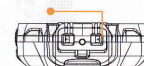
⏪ Back key

Back to the previous page.

● BACK

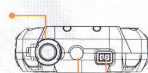
- 3.5mm Earphone Jack and USB cover
- Back camera
- Loud Speaker
- Flash Light

● BOTTOM



● TOP

- Walkie Talkie Antenna Cover



- Laser Light
- Power Key

● RIGHT

- SOS Key
- Volume key
- ET key
- Push To Talk Key
- Camera key/Pick up key



● LEFT



🔌 Power key

Press and hold for several seconds to turn the phone on or off.
To save battery, quick press to temporarily turn the screen on or off.

ET/PTT Key

Press "PTT" key to start walkie talkie function, release to stop.

SOS Key

Press "SOS" key to start SOS function, second press to stop.

● Sidekey function

www.Runbo.net

Getting started

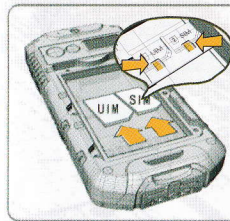
Attention:

One:do not apply excessive force on screw driver when close the battery cover. it may cause:

A: the device housing or battery cover broken.

B:the screw itself broken.

Two: do not use over Runbo designated standard screw driver(Artificial damage shall not be guaranteed).



Attention:

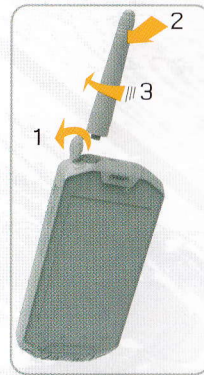
To inset the SIM card smoothly,press the block as shown in orange.

SIM card installation

- 1): Open the battery cover.
- 2): Take out the battery.
- 3): Put the gold colour contact point of SIM card towards the cell phone and push the SIM card into slot.

Install walkie talkie antenna

- 1): Open the walkie talkie antenna cover.
- 2): Put the antenna towards to the connector.
- 3): Rotate to the right until it is fixed.



Tips:
It is waterproof even walkie talkie antenna cover is open.



! To avoid wrong operation,Do not use walkie talkie before install walkie talkie antenna. ()

How to correctly close the USB cover?



Firstly press the point 1,2 , press and push the yellow slide block.it will have a c-click sound when the slide block close properly.

Secondly press the point 3,4,press and push the yellow slide block.it will also have a click sound when the slide block close properly.

Preparatory work before putting into water

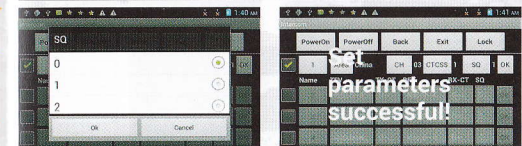
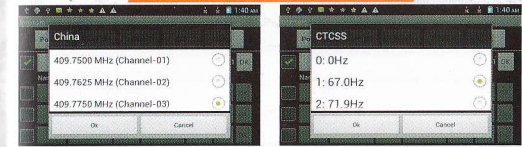
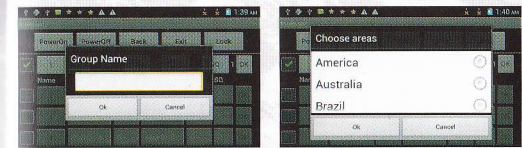
- 1.Battery cover should be locked properly.(see guide for closing battery cover properly)
- 2: Before close the battery cover,make sure inside battery cover is clean,see as shown A B C D,remove the hair,sand,... etc.
- 3:After taken out from water,use dry towel to dry the device.
- 4: Make sure the battery cover is downward when you open it.
- 5:Make sure the USB cover is closed properly before put into water,make sure the USB cover and slot is clean,see as shown A B C D. remove the hair,sand,... etc.

Maintenance

Use clean water to clean the device after used in the sea water. and let it dry naturally.do not use drier.

Prohibition:

- 1:Don't use device under the hot spring or hot water.
- 2:Don't open the battery cover when the device is wet.
- 3:Don't use chemical material to clean the device.



Walkie talkie guide

(Attention:

Install the walkie talkie antenna before using walkie talkie function.)

- 1:SQ:suggest to set SQ in 1.
- 2:make same setting for country,channel,ctcss between different devices.
- 3:full U range:400-470mhz (UHF),Can not support VHF range.
- 4:Use standard SMA connector,easy to expand ,user can select suitable frequency antenna..
- 5:output power:1 watt, working range:10 km in open area.
- 6:support ctcss encryption,totally 39 channels.



Tips 1:

GPS antenna is on the left side of device(see red area as shown in Picture 1),when using GPS function,the GPS antenna should keep upward and no blocking(as shown in Picture2).



Tips 2:

The right side camera key as shown in red mark has both taking a photo and picking up a call function.



Mobile common question

Q:how to restart when the mobile is dead?

A:When the device is dead,press the "Power key" and keep 10 seconds to restart the device,no need to open the battery cover and take out the battery.

Q:Can walkie talkie work if the antenna is not installed?

A:NO,it can't work without antenna.

Runbo After Sales Service Card



Professional&Focus

Warm-hearted Service

www. Runbo. net

Service Hotline: 4000-157257

Runbo

Runbo Warranty Card

Model: _____

Series No.: _____

Purchase Date: _____

Purchase Price: _____

Dealer _____

Name/Stamp: _____

Terms of Warranty Policy:

- 1)Client can make a replacement within 7 days from the date of purchase due to manufacturing quality problem, but the client should keep the device in good condition and packing is complete. this term exclude damage intentionally by the client.
- 2)The device is under one year free warranty from the date of purchase, this term is only under that the quality issue is caused by manufacturing quality problem. also client should show the warranty card along with the device.
- 3)This warranty does not cover the conditions of due to damage intentionally or incorrect operation or open the device by client.
- 4)For the warranty expired device, we will charge repairing and service fee, and user will pay the express fee.
- 5)After sales service hotline: 4000-157257

※ **Notice:** 1: plz keep this warranty card carefully, show it when repairing.
2: Pictures for reference only, subject to our available products.

www. Runbo. net

★ The right of final interpretation belongs to Tintele.

Item	Description list	Record1	Record2	Record3
Handset	Defects as user manual list			
	No display,error,missing line			
	Can not switch on or can not log in the network			
	No vibration			
	Dialing error			
	Irregular switch-off			
	SIM card loose			
	Keypad out of control			
	No voice,one way silent or abnormal volume			
	Housing damage or crack due to materials			
Charger	not working properly or can not charge when use specified charger			
Battery	Not working after charging fully			
	Battery capacity after charging fully less than 80% of standard			
SIM card	Not working			
Earphone	Not working			
USB	Not working			

※ If your mobile have above problems,plz mark it in blank accordingly.

Repairing Record	Remark
Record1	
Record2	
Record3	

※ If found other defects,plz fill in the remark column.